


From concept to reality

Rosti Group

Overview Presentation

Rosti
From concept to reality

A COMPANY WITHIN
 **NORDSTJERNAN**

Who We Are



Rosti is owned by **Nordstjernan**, a Swedish, ethical company with financial strength

- Nordstjernan is a Swedish family-controlled investment company founded by Axel Johnson in 1890
- Developed into one of Sweden's largest industrial conglomerates during the 20th century
- Nordstjernan invests in companies in numerous industries with Nordic headquarters and a global presence
- The companies within Nordstjernan have together approximately 60,000 employees and their combined turnover is 11 BEUR



A technology driven, engineered plastic and contract manufacturing business with sites throughout **Asia & Europe**

Headquarters

- **Sweden, Malmö**

Sites

- **Sweden, Gislaved**
- **UK, Stamford Bridge**
- **Germany, Dresden**
- **Poland, Bialystok**
- **Romania, Ploiesti**
- **Turkey, Istanbul**
- **Malaysia, Senai**
- **China, Suzhou**

Development Centres

- **UK, Birmingham**
- **Poland, Bialystok**
- **China, Suzhou**
- **Germany, Oldenburg***



Manufacturing sites

8

3 Innovation & Tech
support locations



IMM

400_{cira}



Employees

3,500_{cira}



Turnover

320+ MEUR

With a **diverse blue-chip customer base**; supported by longstanding relationships

15-35+ years



10-14 years



5-9 years



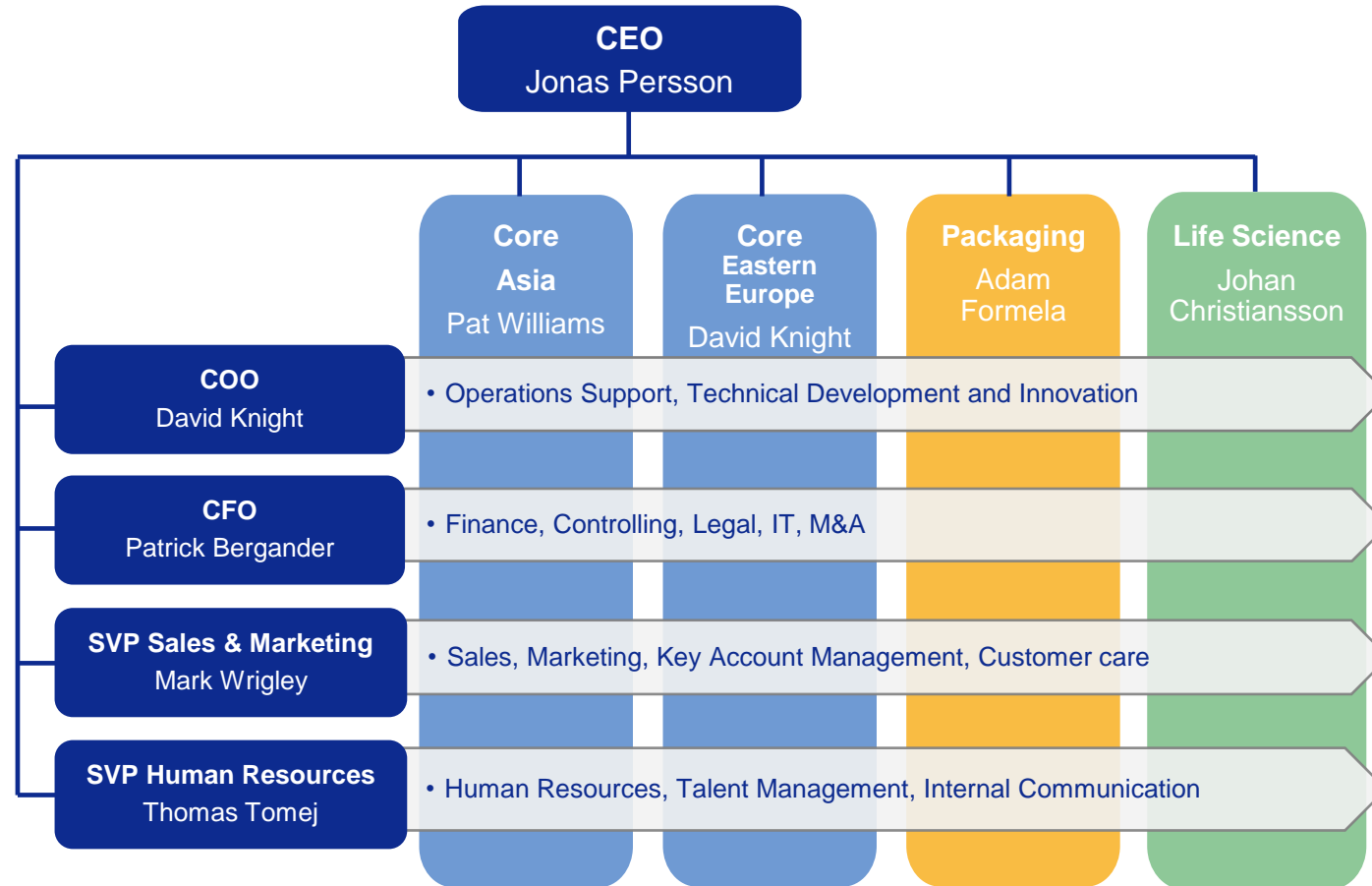
0-4 years



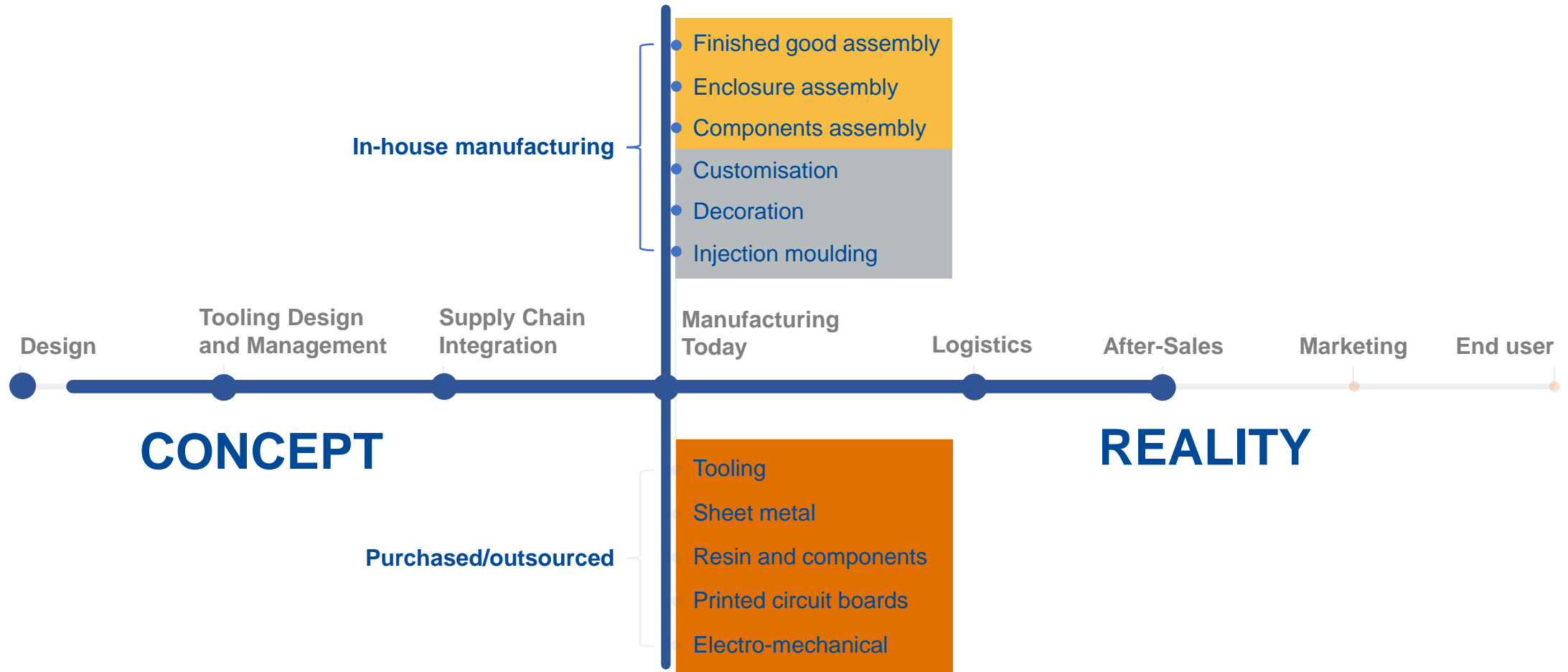
By growing with key customers and acquisitions, Rosti has continued to evolve at a successful pace



Organised into three operational divisions, with supporting group functions; meaning faster decision making



Rosti's **commitment** is to support existing and new customers to develop their products '**From Concept to Reality**'



A wide-angle photograph of a large industrial manufacturing facility. The floor is filled with various machines, workstations, and equipment. A yellow semi-transparent overlay covers the left half of the image. The text "What We Do" is written in white on the orange background.

What We Do

World class, multi-region manufacturing sites ensure our customers gain a competitive edge

Manufacturing & Assembly

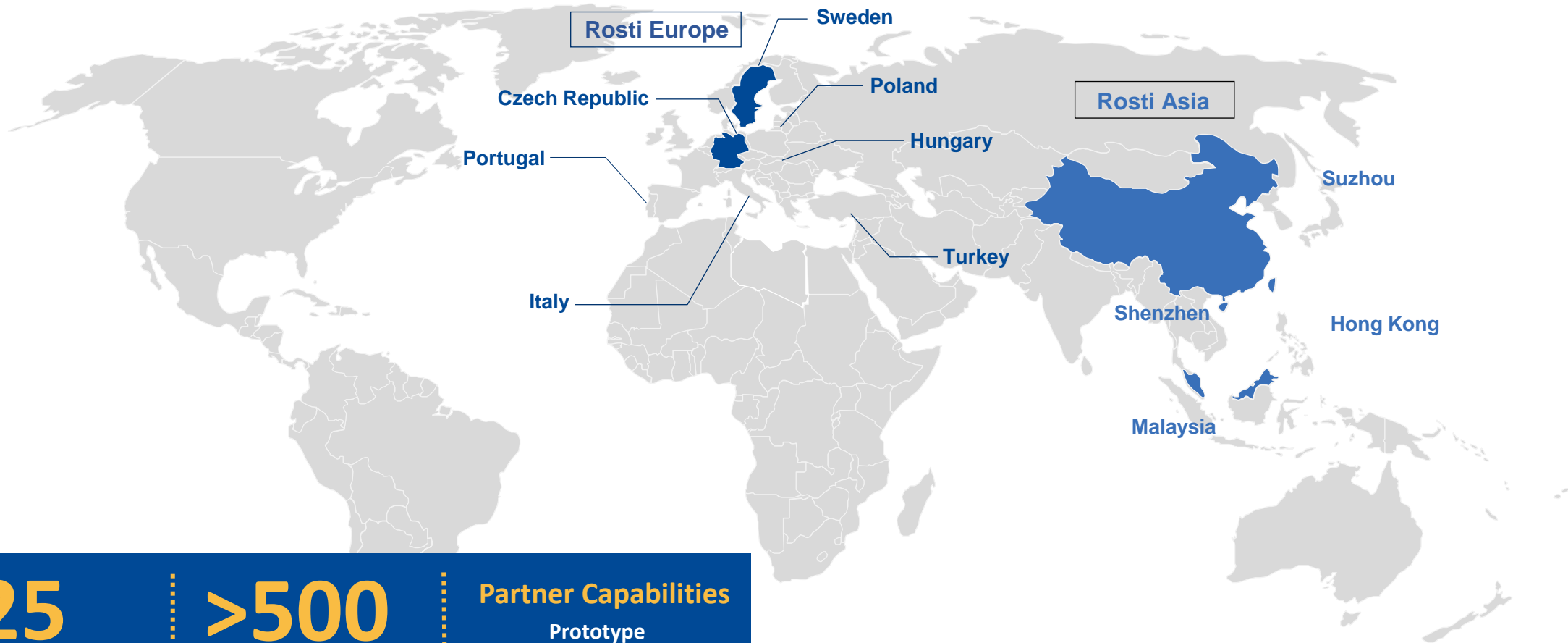
- ESD controlled environment
- U-shape cell formations for optimized assembly
- Full traceability control
- Painting, printing and in-mould decoration
- Successful technology introduction process

Quality Accreditations

- International Quality certifications including FDA
- FDA/BRC certified environment
- ISO 9001: 2000
- ISO 14001 (Environmental)
- ISO TS 16949 (Automotive)
- ISO 13485 (Medical Devices)
- ISO 50001 (Energy)
- OHSAS 18001 (HSSE)



With a **significant tooling spend**, Rosti has built strong relationships with **selected toolmakers** to meet customers needs



25

Specialist toolmakers
serving all Rosti sites

>500

Total yearly capacity

Partner Capabilities

Prototype
Partner
Production

A close-up photograph of a hand pouring small, bright green, cylindrical pellets onto a white surface. The pellets are forming a small pile. The background is a soft, out-of-focus green, suggesting foliage. The overall image has a green tint.

Sustainability

Continuously working with our customers & suppliers to help **build sustainability** into all the products we manufacture



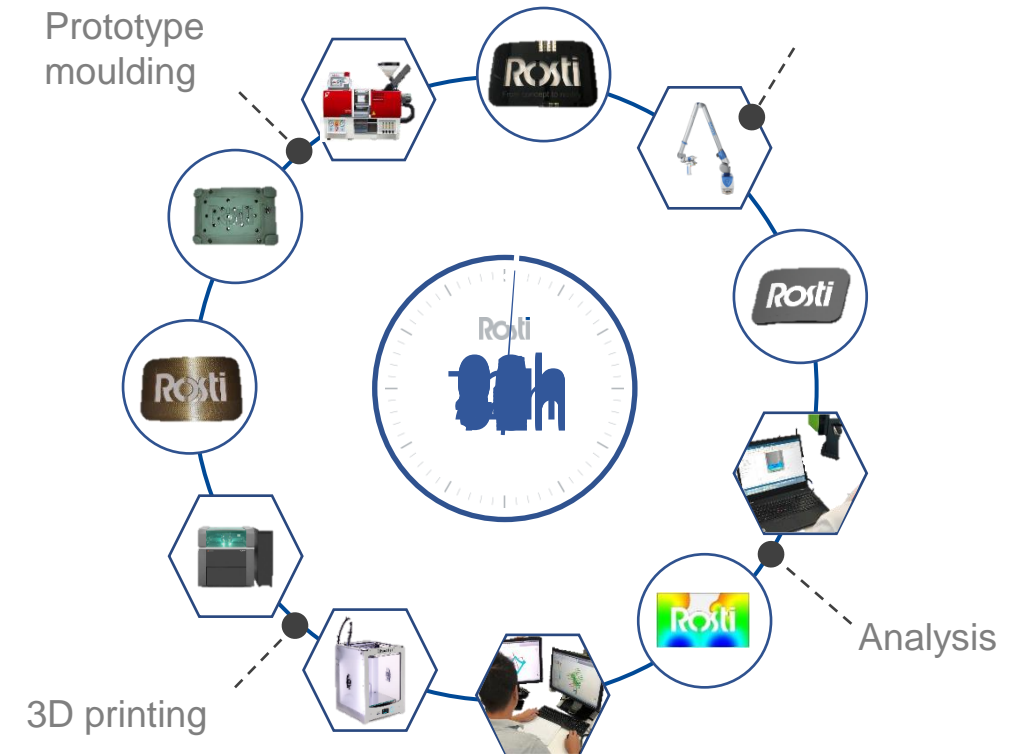
Concept to Reality

A multi-million euro investment to support customers needs to take their products 'from Concept to Reality'

Rosti's state of the art innovation labs support customers in agile development programmes that deliver ideas to market more rapidly and cost-effectively than traditional technologies.

Key Result Areas:

- Reverse value engineering from physical parts to digitized 3D files
- Additive manufacturing parts
- 3D printed full colour concept evaluation models
- 3D printed functional prototype components
- Digitally produced injection mould tooling for moulding within 72hrs of receipt of drawing





CAPABILITIES

Rosti capabilities serve different markets

Health, Beauty & Wellbeing



Health products with touch comfort



High Complex Assembly



Cosmetic devices with integrated electronics – full CM supply



Customised IMD products to suit customer marketing campaigns



Medical moulding & assembly in Clean Room facility



Critical modules moulding & assembly



Injection blow moulding in BPA free environment

Rosti capabilities serve different markets

FOOD & HYGENIE



Paper Handling



Soap Dispensing



High Aesthetic with
Integrated Display



Full CM Supply for
High End Enabled
Cooking Device



High Volume
Precision Widgets for
Beverages



High Finish with BPA
Production for Food
Standards



Critical Specifications
with High Aesthetics



High Volume Food
Packaging in a
Controlled
Environment



High Volume
Precision Packaging
inc Digital Printing

Rosti capabilities serve different markets

BUSINESS, TECHNICAL, AUTOMOTIVE



Mould & Assembly of
Technical & Cosmetic
Finishing's



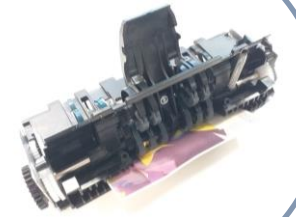
Automotive Trims



Small Precision
Functional Parts



Power Tools



High Complex
Assembly &
Automated Testing



High Complex
Assembly & 100%
Test Process



Fully Automated
Mould, Over Mould &
Assembly Station



Mould & Assembly
Combine Cell for
Precision Filters



Heavy Duty
Construction Parts
including Fuel Tanks

ROSTI GROUP

Big Enough to Cope, Small Enough to Care

sales@rosti.com | rosti.com

